

TYLINK™ 360

High Security Anchor Mount

INSTALLATION INSTRUCTIONS

Before installing your TYLINK 360 series high security Anchor Mount, establish the following:

- That the mounting surface is concrete with a pressure rating of at least 20MPa (1.5tons/in²) and at least 10cm (4") thick.

This would be typical of the average garage floor. Installation to brick or sand stone is not recommended.

- The best position on the ground to mount the anchor body. Ideally it should be mounted in a position that is easily accessible but also where it will not interfere with other things, such as vehicles or pedestrians.

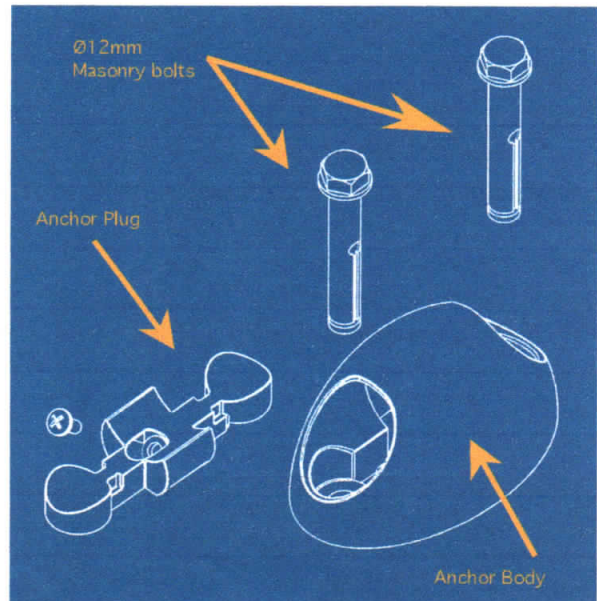
It should not be mounted within 60cm (2ft) of the edges of the concrete base as tightening of the masonry bolts may cause cracking.

- That the link on your TYLINK 3000 is long enough to enable it to pass through the anchor and through the item to be secured.

The TYLINK is available in 60cm (2ft), 90cm (3ft), 120cm (4ft), 150cm (5ft) and 180cm (6ft) lengths.

Tools required:

Cordless or electric drill with hammer action, Ø12mm (Ø15/32") masonry drill bit, 16mm or 5/18" hex-head socket wrench and a No.2 Philips screwdriver.



Installation steps:

1. Remove the Anchor Plug from the Anchor Body.
2. After establishing the mounting position, drill one of the holes in the concrete to a depth of at least 90mm (3½"). If possible, use a vacuum cleaner to remove the concrete dust.
3. Secure the Anchor Body with one of the masonry bolts.
4. Drill through the second hole in the Anchor Body and secure the second masonry bolt (**Note: if your masonry drill bit is not long enough, then the drill chuck may contact with the Anchor Body. If this happens, simply loosen the first bolt, rotate the Anchor Body out of the way and continue drilling the second hole to the recommended depth.**)
5. Replace the Anchor Plug and secure with the screw provided.

Your TYLINK 360 Anchor Mount is now ready for operation.

TYLINK™ 360

High Security Anchor Mount

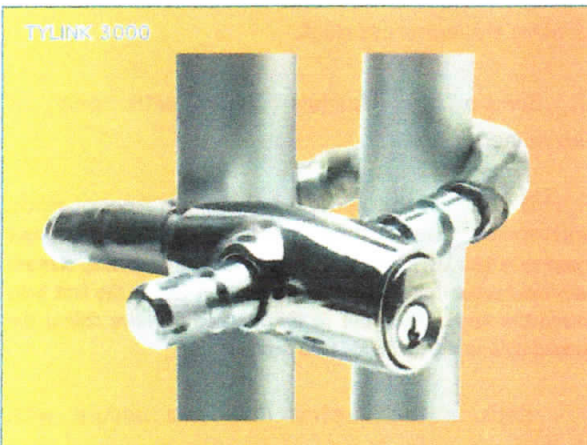
OTHER TYSON SECURITY PRODUCTS

TYLINK 2000

Use a similar hardened steel link system to the TYLINK 3000 but with a mountable lock body.

TYLINK 3000

Uses a similar hardened steel link system to the TYLINK 2000 but with a portable lock body.



Maintenance: Lubricate your TYLINK products with a small amount of graphite powder. DO NOT use oil, grease or spray.

Key replacement: Replace your keys with brass keys only. DO NOT use steel keys.

Guarantee: This product is guaranteed to be free from defects in materials and workmanship for a period of one (1) year from the date of original purchase. This warranty is for replacement of product only and Tyson Security does not accept responsibility for any direct or consequential damage caused by this product or its use. This warranty does not cover damage that results from faulty installation or usage, alteration or modification of the product or tarnishing of the finish including colour damage due to weather, salt or chemicals. Should this product not perform satisfactorily in its intended application, return it to place of purchase for replacement.

THIS LOCK IS A THEFT DETERRENT ONLY. NO RESPONSIBILITY IS ACCEPTED FOR CONSEQUENTIAL DAMAGE OR LOSS.

TYSON

Innovative Solutions

TYSON Security Pty Ltd

ABN: 30 110 615 471

**47 Market Street
Naremburn NSW 2065
AUSTRALIA**

Web: www.tysonsecurity.com

Email: contact@tyson-global.com